

Oakley (Dylan)

1574 SQ FT

20945 95 Avenue NW



- Modern 3 bedroom, 2 ½ bath, 1574 sqft. duplex with a loft and double car garage
- Laminate and tile flooring throughout the main floor
- Upgraded lighting on the main floor, includes pot and pendant lights in kitchen and pot lights in great room
- Beautiful quartz countertops in the kitchen with a fantastic flush island
- Maple 36” upper cabinets with riser to the ceiling
- A classy French style pantry door with a frosted glass insert
- Stainless steel Samsung appliances with a white front load washer and dryer
- Pots and pan drawers
- Paint grade railing with metal spindles on the main floor
- Tile surrounds in shower ensuite and in tub/shower main bath
- Front and rear landscaping included
- Blinds installed
- 6’ garden doors
- Deck with a gas line for the BBQ
- Keyless entry for the OH garage
- Cultured stone on garage face and front post
- Precast cement front steps
- Large south west lot backing onto green space within a school yard

Webber Greens Showhome

9511 & 9515-209 Street, Edmonton, AB.

780.244.2469

sbeatty@bedrockhomes.ca

Job # WBR-0-034016 Lot 104, Block 44, Plan 162-4038

Notes:

bedrockhomes.ca

VISIT US AT ANY OF OUR SHOWHOMES!

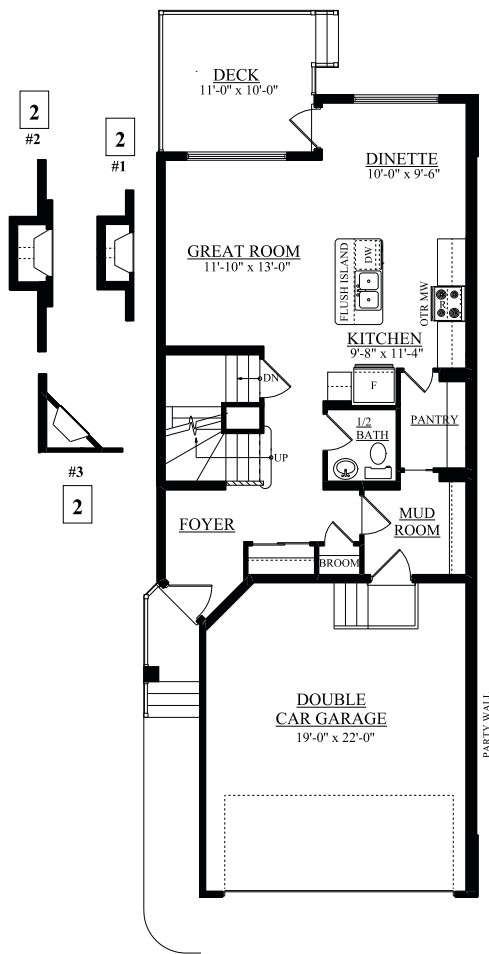
Monday - Thursday 3-8pm, Weekends & Holidays 12-5PM



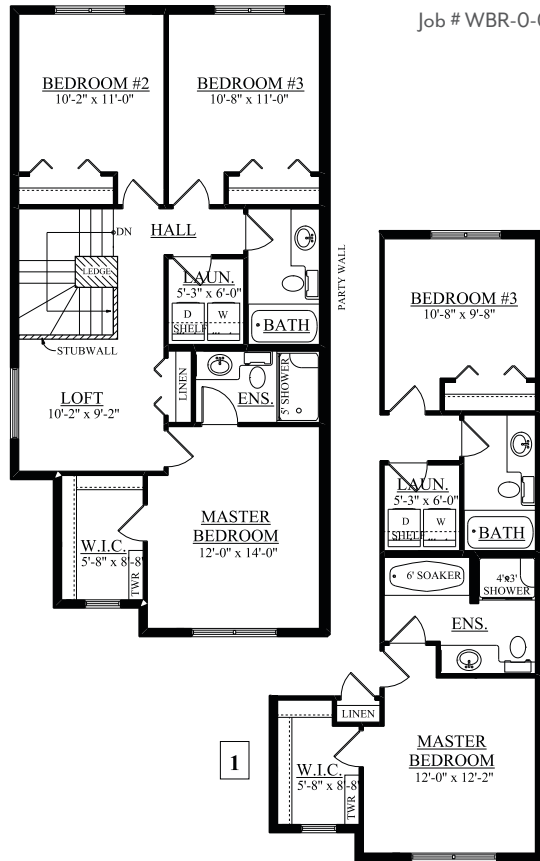
Oakley (Dylan)

1574 SQ FT

20945 95 Avenue NW



Main Floor
715 sqft



Second Floor
859 sqft

Webber Greens Showhome

9511 & 9515-209 Street, Edmonton, AB.

780.244.2469

sbeatty@bedrockhomes.ca

Job # WBR-0-034016 Lot 104, Block 44, Plan 162-4038

bedrockhomes.ca

VISIT US AT ANY OF OUR SHOWHOMES!

Monday - Thursday 3-8pm, Weekends & Holidays 12-5PM

